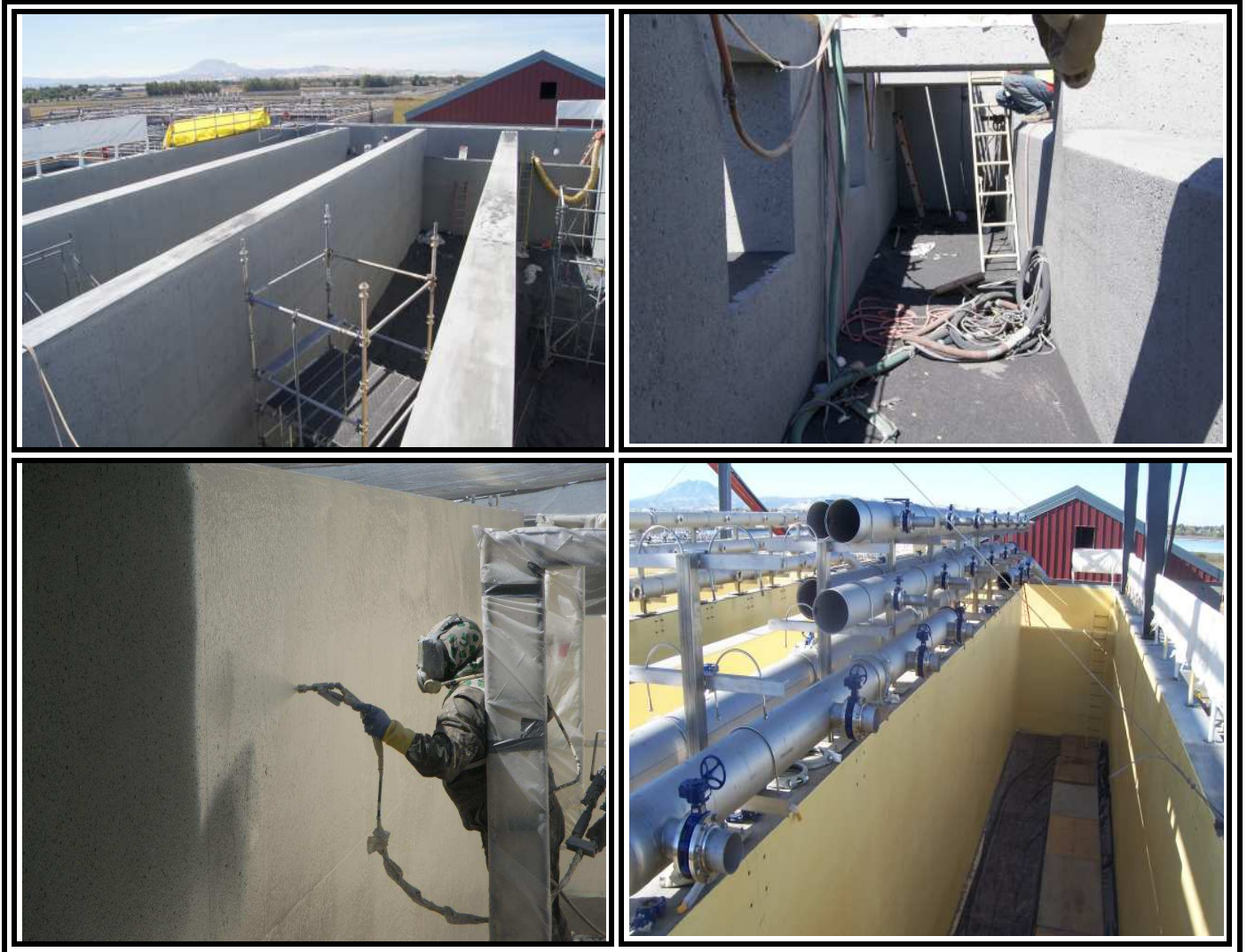


A CASE HISTORY

ENDURA-FLEX[®] 1988



IRONHOUSE SANITARY DISTRICT MICRO BIOLOGICAL REACTOR (MBR)

Polyurethane Type: Endura-Flex[®] EF-1988,
Expanded Film 100 mils
Solid Film 40 mils

Vessel: New Concrete, 13,000 ft²

Applicator:
Redwood Painting
Contact: Greg Davidson
Phone: 925-432-4500

Date of Application: September, 2010